

**ICG** **INDOFINE Chemical Company, Inc.**

121 Stryker Lane, Bldg. 30, Suite 1 • Hillsborough, NJ 08844 • U.S.A.

Phone: (908) 359-6778 • FAX: (908) 359-1179

website: [www.indofinechemical.com](http://www.indofinechemical.com)

e-mail: [chemical@indofinechemical.com](mailto:chemical@indofinechemical.com)

**CERTIFICATE OF ANALYSIS**

Catalog Number: 17-076

Product Name: **4-CHROMANONE**

CAS Number: [491-37-2]

Lot Number: 1510681

Chemical Formula: C<sub>9</sub>H<sub>8</sub>O<sub>2</sub>

Molecular Weight: 148.16

Melting Point: 33-35°C

Moisture(KF): 0.28%

Appearance: Off white solid

TLC: Hexane:Ethyl acetate (8:2)

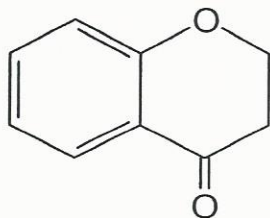
Solubility: Soluble in Chloroform

NMR Spectrum: Enclosed (conforms to the structure)

Storage: Store at 0-4°C

Purity(HPLC): 99.22%

Purity(GC): 99.43%





# INDOFINE Chemical Company, Inc.

121 Stryker Lane, Bldg. 30, Suite 1 • Hillsborough, NJ 08844 • U.S.A.

Phone: (908) 359-6778 • FAX: (908) 359-1179

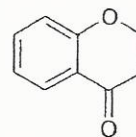
website: [www.indofinechemical.com](http://www.indofinechemical.com)

e-mail: [chemical@indofinechemical.com](mailto:chemical@indofinechemical.com)

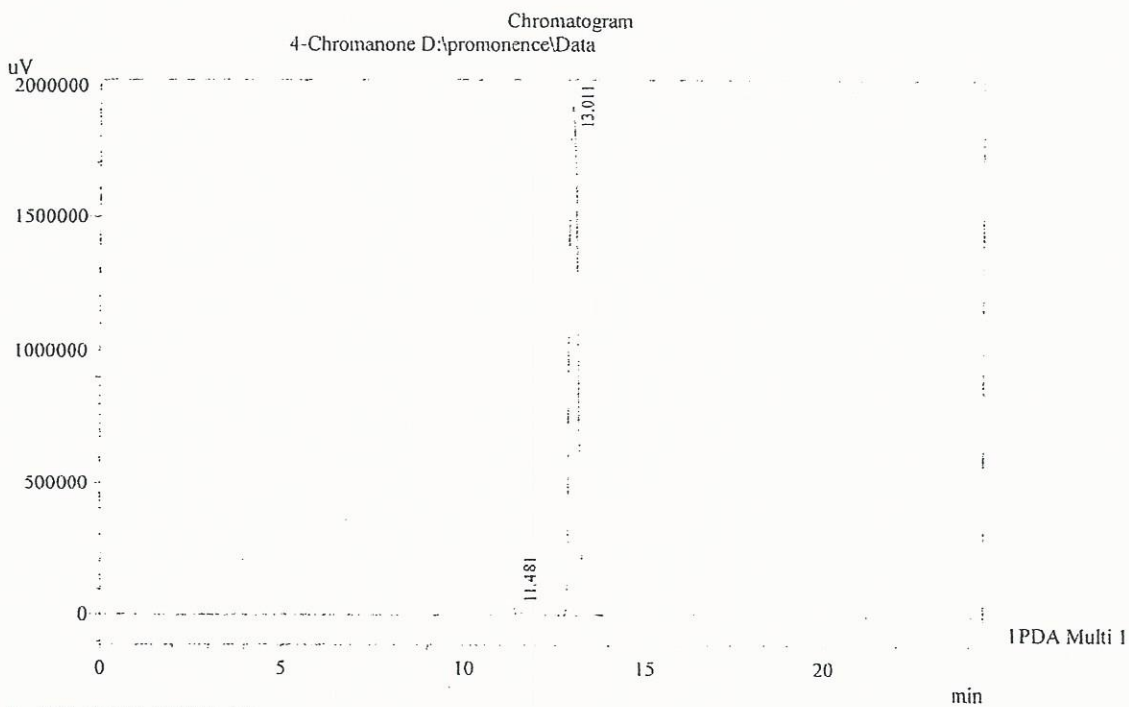
## HPLC ANALYSIS

Acquired by : Admin  
Sample Name : 4-Chromanone  
Sample ID : 4.0 kg Lot  
Injection Volume : 20 uL  
Data Filename : 290915H.lcd  
Method Filename : Linear Gradient.M.lcm

Catalog No.: 17-076  
Product Name: 4-Chromanone  
Lot No.: 1510681



Column : Inertsil C-18, 250X4.6mm 5.0µm  
Flow : 1.000mL/min.  
Mobile Phase : A(Water 0.05% TFA) : B(ACN)  
00.01 : 90 : 10  
12.00 : 10 : 90  
20.00 : 10 : 90  
23.00 : 90 : 10



1 PDA Multi 1 / 254nm 4nm

PeakTable

PDA Ch1 254nm 4nm

| Peak# | Name         | Ret. Time | Area     | Area % | Relative Retention Time |
|-------|--------------|-----------|----------|--------|-------------------------|
| 1     | RT:11.482    | 11.481    | 243504   | 0.78   | 0.88                    |
| 2     | 4-Chromanone | 13.011    | 30894486 | 99.22  | 1.00                    |
| Total |              |           | 31137989 | 100.00 |                         |



# INDOFINE Chemical Company, Inc.

121 Stryker Lane, Bldg. 30, Suite 1 • Hillsborough, NJ 08844 • U.S.A.

Phone: (908) 359-6778 • FAX: (908) 359-1179

website: [www.indofinechemical.com](http://www.indofinechemical.com)

e-mail: [chemical@indofinechemical.com](mailto:chemical@indofinechemical.com)

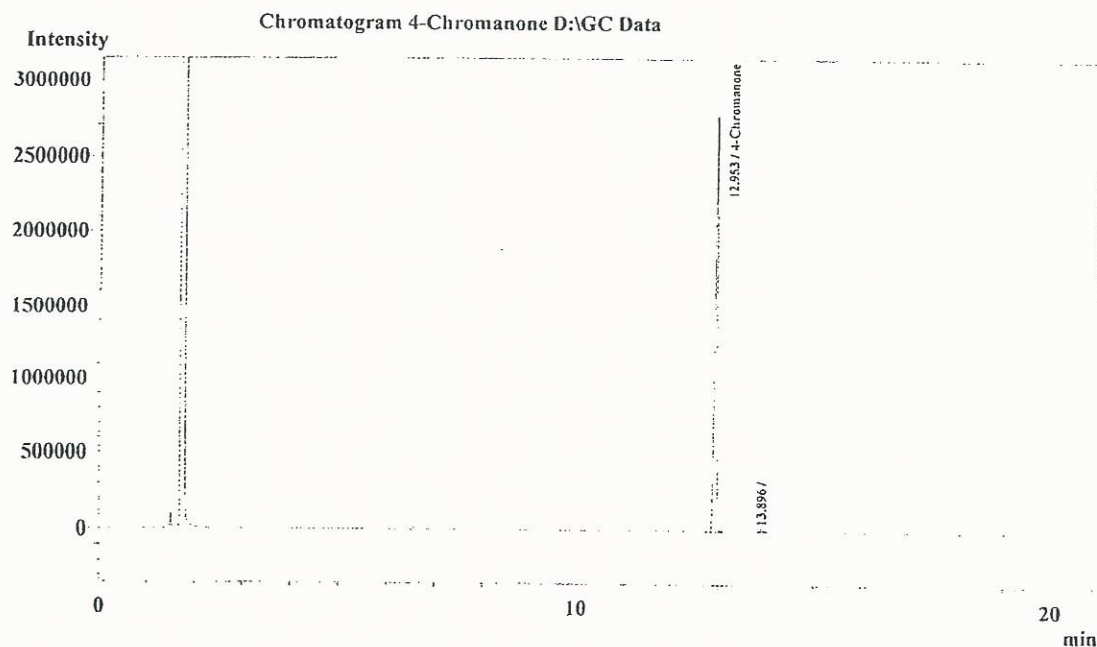
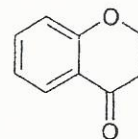
## GC ANALYSIS

User Name : Satyanarayana  
Sample Name : 4-Chromanone  
Sample ID : 4.0 kg Lot  
Method Name : D:\Methods\BRC Method.gcm  
Data File Name : D:\GC Data

Catalog No.: 17-076  
Product Name: 4-Chromanone  
Lot No.: 1510681

### Description

Column : EB-5 - (30M x 0.32mm x 1.0 um)  
Injector - 250°C  
Detector - 300°C  
Column temp - 80(2)-10-250(2)



Peak Table - Channel 1

| Peak# | Ret. Time | Area    | Height  | Area%  | Name         |
|-------|-----------|---------|---------|--------|--------------|
| 1     | 12.953    | 9729970 | 2803665 | 99.43  | 4-Chromanone |
| 2     | 13.896    | 55377   | 16861   | 0.57   |              |
| Total |           | 9785347 | 2820526 | 100.00 |              |



# INDOFINE Chemical Company, Inc.

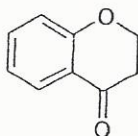
121 Stryker Lane, Bldg. 30, Suite 1 • Hillsborough, NJ 08844 • U.S.A.

Phone: (908) 359-6778 • FAX: (908) 359-1179

website: [www.indofinechemical.com](http://www.indofinechemical.com)

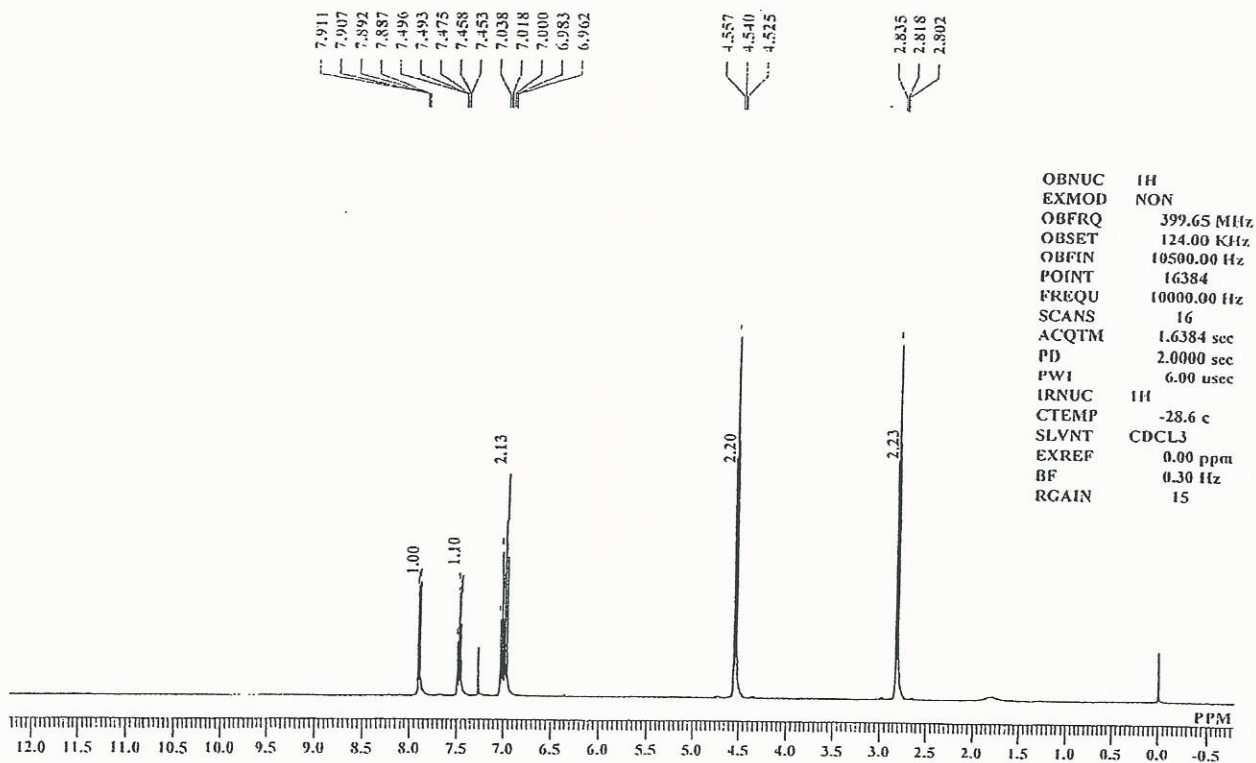
e-mail: [chemical@indofinechemical.com](mailto:chemical@indofinechemical.com)

Catalog No.: 17-076  
Product Name: 4-Chromanone  
Lot No.: 1510681



4 CMN 4 Kgi(Lot) 1H NMR CDCL<sub>3</sub>

Analysed By: GRY



# ICC INDOFINE Chemical Company, Inc.

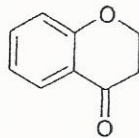
121 Stryker Lane, Bldg. 30, Suite 1 • Hillsborough, NJ 08844 • U.S.A.

Phone: (908) 359-6778 • FAX: (908) 359-1179

website: [www.indofinechemical.com](http://www.indofinechemical.com)

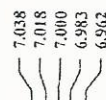
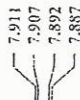
e-mail: [chemical@indofinechemical.com](mailto:chemical@indofinechemical.com)

Catalog No.: 17-076  
Product Name: 4-Chromanone  
Lot No.: 1510681

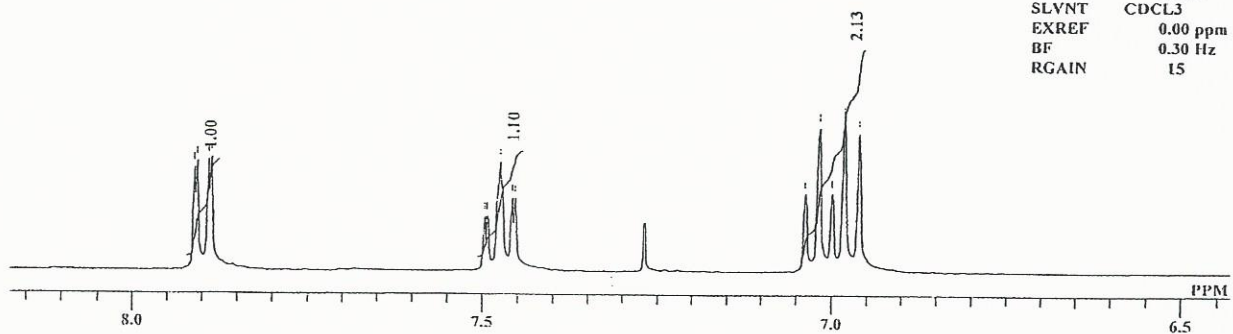


4 CMN 4 Kgi(Lot) III NMR CDCl3

Analysed By: GRY



|       |             |
|-------|-------------|
| OBNUC | 1H          |
| EXMOD | NON         |
| OBFRQ | 399.65 MHz  |
| OBSET | 124.00 KHz  |
| OBFIN | 10500.00 Hz |
| POINT | 16384       |
| FREQ  | 10000.00 Hz |
| SCANS | 16          |
| ACQTM | 1.6384 sec  |
| PD    | 2.0000 sec  |
| PW1   | 6.00 usec   |
| IRNUC | 1H          |
| CTEMP | -28.6 c     |
| SLVNT | CDCL3       |
| EXREF | 0.00 ppm    |
| BF    | 0.30 Hz     |
| RGAIN | 15          |





# INDOFINE Chemical Company, Inc.

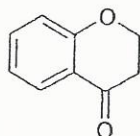
121 Stryker Lane, Bldg. 30, Suite 1 • Hillsborough, NJ 08844 • U.S.A.

Phone: (908) 359-6778 • FAX: (908) 359-1179

website: [www.indofinechemical.com](http://www.indofinechemical.com)

e-mail: [chemical@indofinechemical.com](mailto:chemical@indofinechemical.com)

Catalog No.: 17-076  
Product Name: 4-Chromanone  
Lot No.: 1510681



4 CMN 4 Kg(Lot) 1H NMR CDCL3

Analysed By : GRY

